



RETAIL BUILDING FOR SALE

5911 NW Barry Road Kansas City, Missouri



CONTACT AGENT FOR PRICING | 5,444 SF ON 0.69 ACRE

DEMOGRAPHICS

Drive Time	5 min	10 min	15 min
Estimated Population	23,579	78,325	176,711
Avg. Household Income	\$118,121	\$115,620	\$116,998

- Open concept show room with several offices and storage area with high ceilings
- Great visibility and access to Barry Road
- Shadowed by St. Luke's Hospital North and Hyvee Grocery Store and surrounded by a multitude of national and regional businesses
- Great Owner/User or Investment Opportunity
- Zoning is B1-1 Neighborhood Business



CLICK HERE TO VIEW MORE LISTING INFORMATION

For More Information Contact:

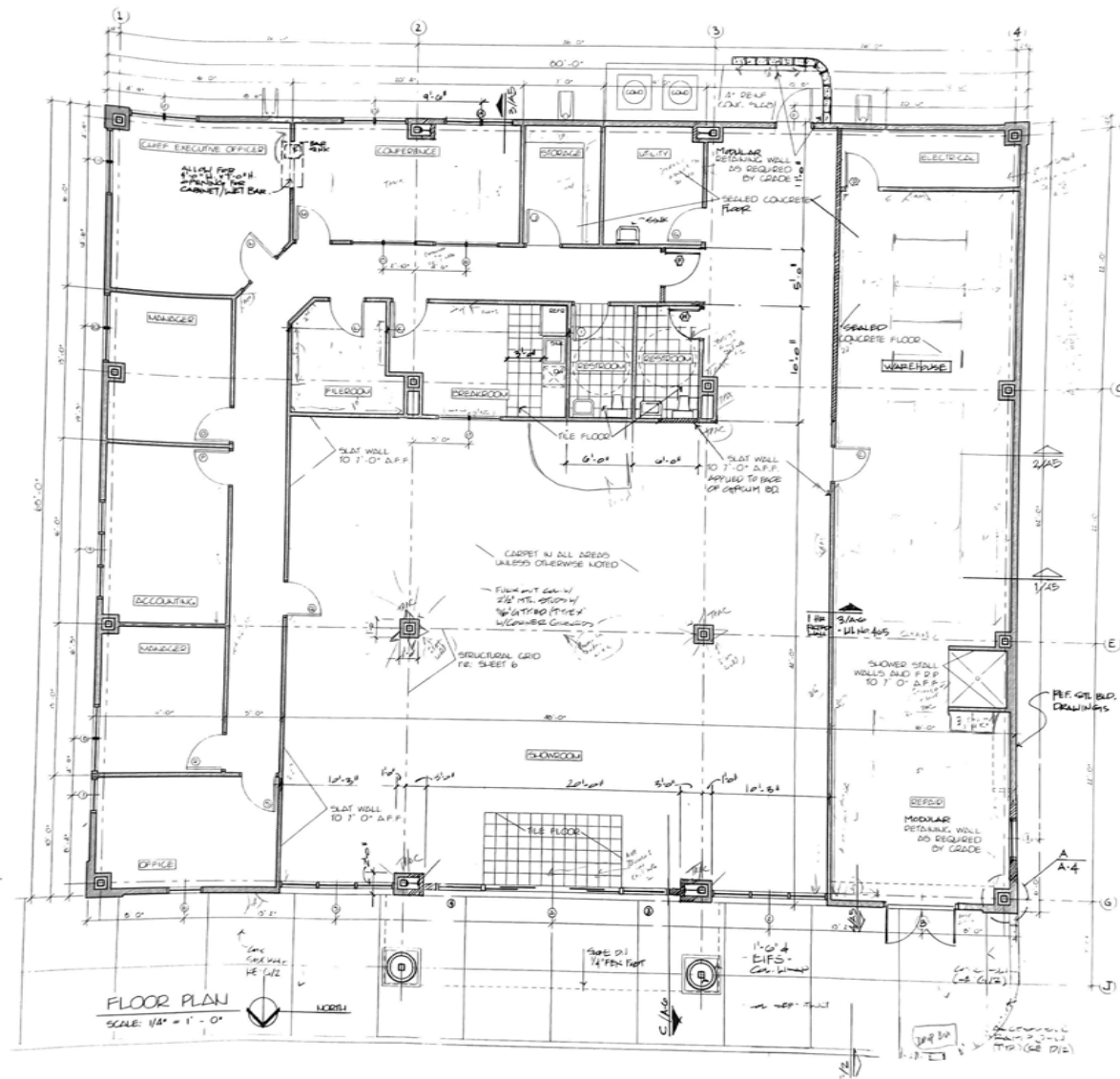
MAX KOSOGLAD | 816.412.7363 | mkosoglad@blockandco.com

PHIL PECK, CCIM | 816.412.7364 | ppeck@blockandco.com

Exclusive Agents

PHOTOS







RETAIL BUILDING FOR SALE

5911 NW Barry Road Kansas City, Missouri

AERIAL





RETAIL BUILDING FOR SALE

5911 NW Barry Road Kansas City, Missouri

DRONE AERIAL



All information furnished regarding property for sale or lease is from sources deemed reliable, but no warranty or representation is made as to the accuracy thereof and the same is subject to errors, omissions, changes of prices, rental or other conditions, prior sale or lease or withdrawal without notice.



RETAIL BUILDING FOR SALE

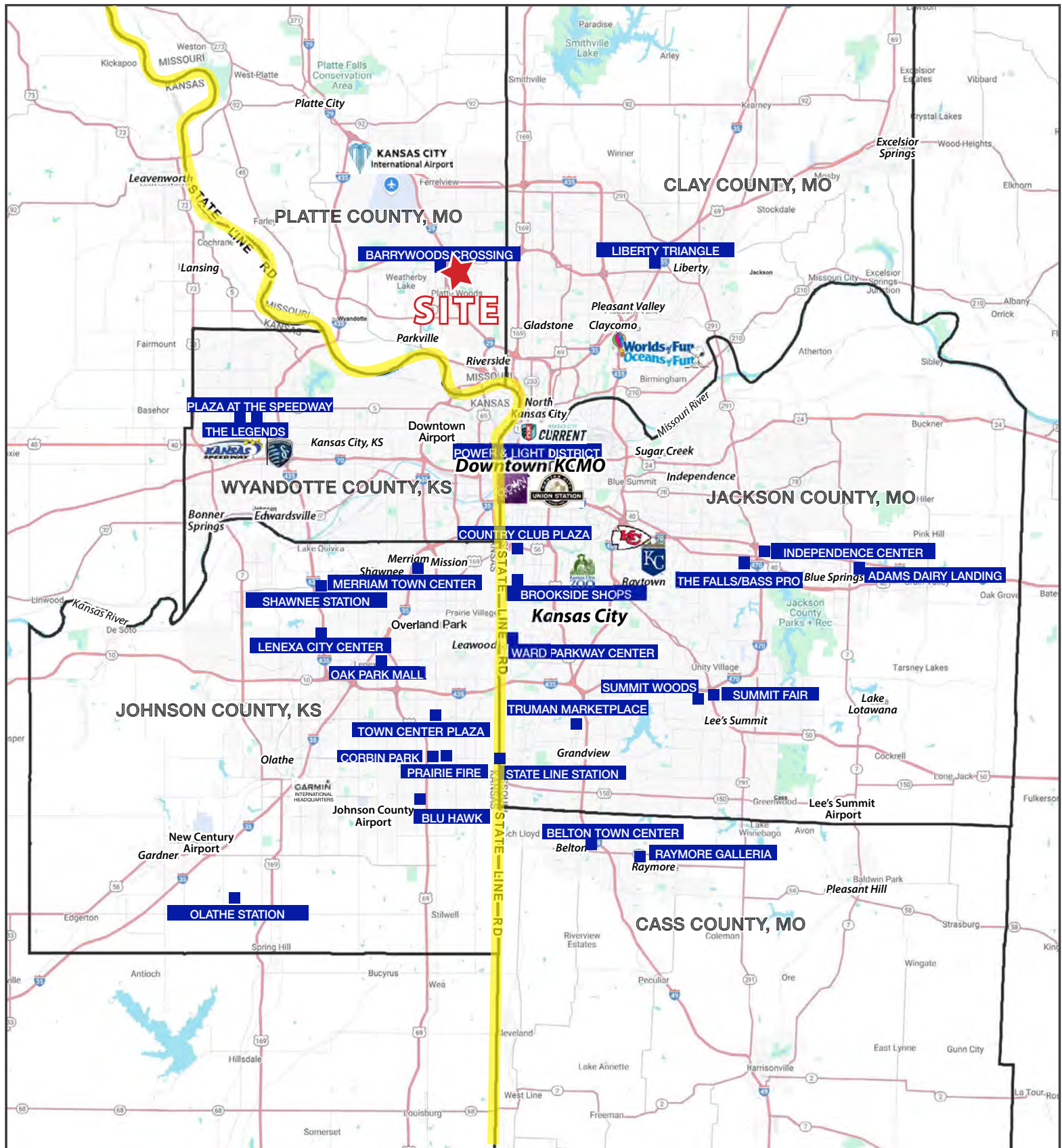
5911 NW Barry Road Kansas City, Missouri

AERIAL



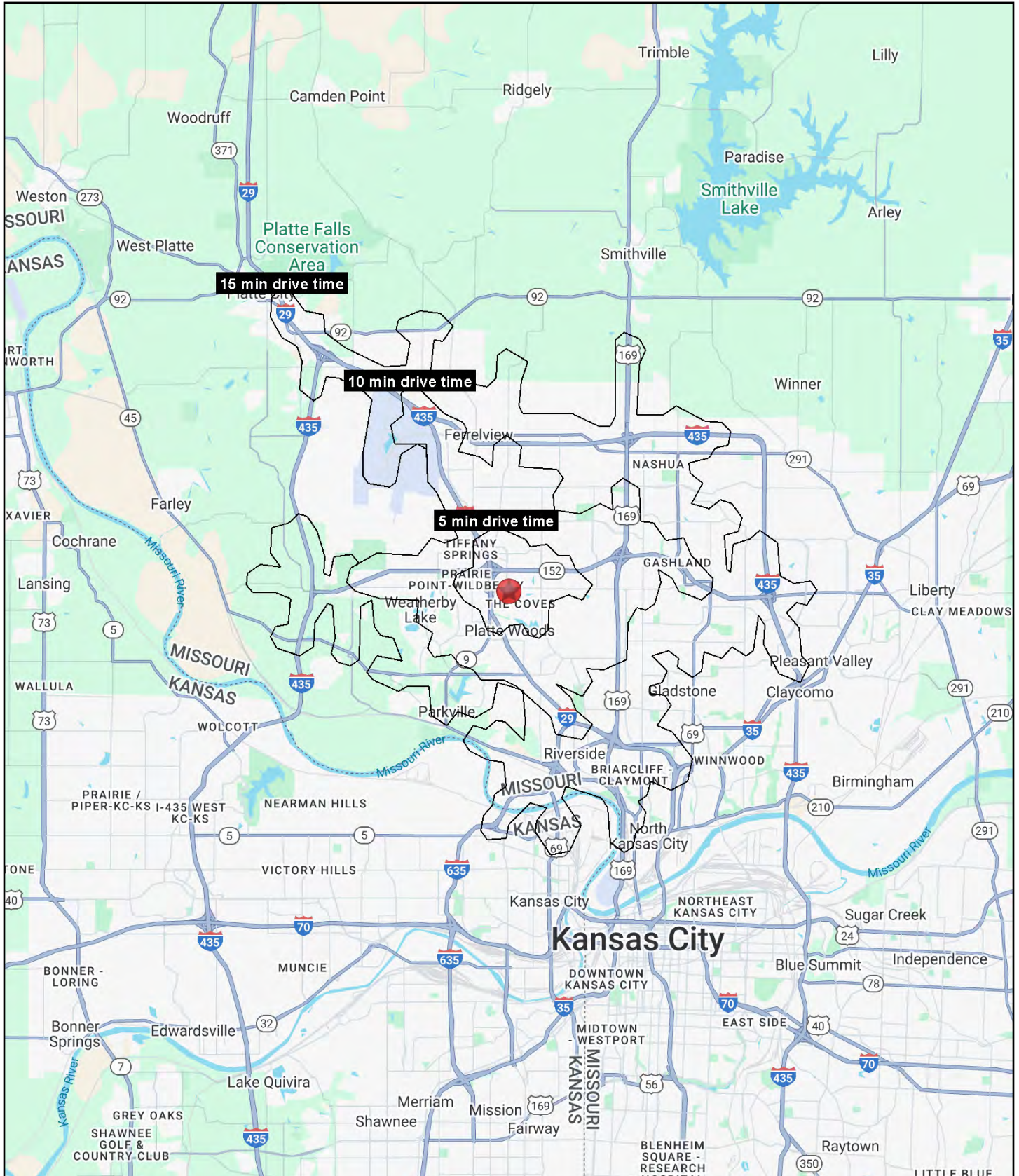
RETAIL BUILDING FOR SALE

5911 NW Barry Road Kansas City, Missouri



RETAIL BUILDING FOR SALE

5911 NW Barry Road Kansas City, Missouri





RETAIL BUILDING FOR SALE

5911 NW Barry Road Kansas City, Missouri

5911 NW Barry Road Kansas City, MO 64154	5 min drive time	10 min drive time	15 min drive time
Population			
2025 Estimated Population	23,579	78,325	176,711
2030 Projected Population	24,219	81,520	182,185
2020 Census Population	21,184	74,061	168,128
2010 Census Population	18,112	61,624	140,930
Projected Annual Growth 2025 to 2030	0.5%	0.8%	0.6%
Historical Annual Growth 2010 to 2025	2.0%	1.8%	1.7%
2025 Median Age	37.1	36.6	37.2
Households			
2025 Estimated Households	10,705	33,886	75,164
2030 Projected Households	11,322	36,217	79,383
2020 Census Households	9,316	30,737	69,236
2010 Census Households	8,071	25,887	58,508
Projected Annual Growth 2025 to 2030	1.2%	1.4%	1.1%
Historical Annual Growth 2010 to 2025	2.2%	2.1%	1.9%
Race and Ethnicity			
2025 Estimated White	74.3%	75.1%	75.6%
2025 Estimated Black or African American	12.5%	12.1%	11.2%
2025 Estimated Asian or Pacific Islander	4.7%	4.1%	4.1%
2025 Estimated American Indian or Native Alaskan	0.3%	0.3%	0.4%
2025 Estimated Other Races	8.2%	8.3%	8.7%
2025 Estimated Hispanic	8.8%	8.3%	8.7%
Income			
2025 Estimated Average Household Income	\$118,121	\$115,620	\$116,998
2025 Estimated Median Household Income	\$97,938	\$95,111	\$94,964
2025 Estimated Per Capita Income	\$53,723	\$50,073	\$49,828
Education (Age 25+)			
2025 Estimated Elementary (Grade Level 0 to 8)	0.8%	1.3%	1.4%
2025 Estimated Some High School (Grade Level 9 to 11)	1.5%	2.3%	3.2%
2025 Estimated High School Graduate	17.2%	19.8%	21.7%
2025 Estimated Some College	24.9%	23.1%	22.2%
2025 Estimated Associates Degree Only	8.5%	9.3%	8.7%
2025 Estimated Bachelors Degree Only	27.9%	27.6%	27.1%
2025 Estimated Graduate Degree	19.1%	16.6%	15.7%
Business			
2025 Estimated Total Businesses	915	2,638	5,710
2025 Estimated Total Employees	8,401	29,848	63,447
2025 Estimated Employee Population per Business	9.2	11.3	11.1
2025 Estimated Residential Population per Business	25.8	29.7	30.9

©2025, Sites USA, Chandler, Arizona, 480-491-1112 Demographic Source: Applied Geographic Solutions 5/2025, TIGER Geography - RS1